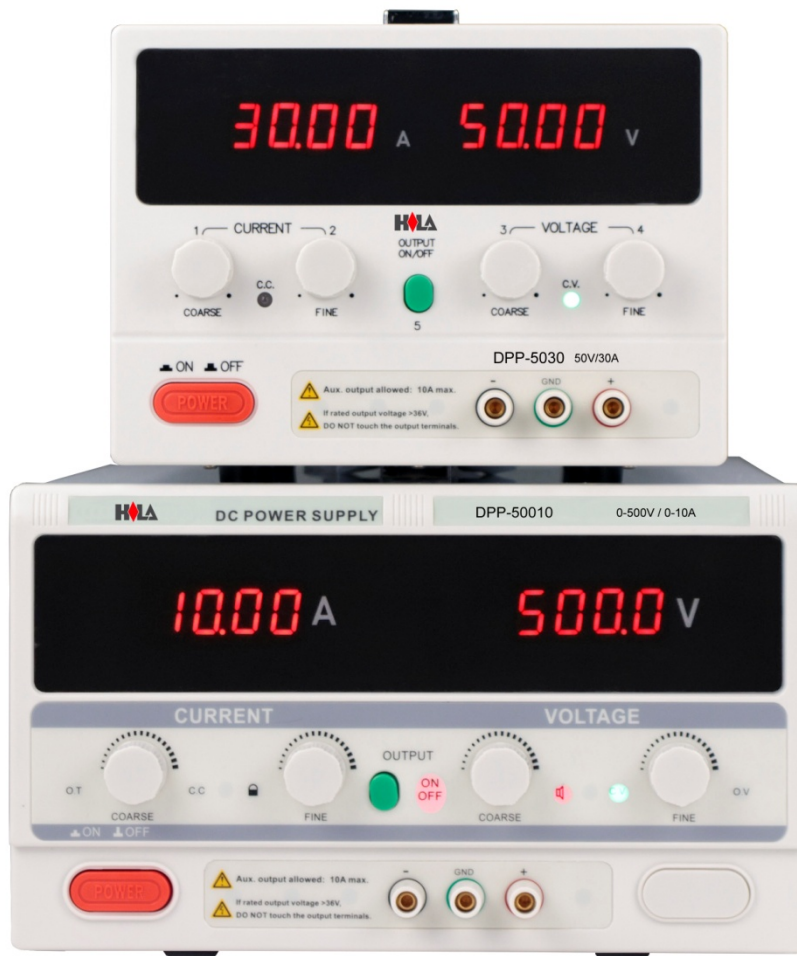


DPP 可程式直流電源供應器，大功率系列 (500W~6KW)



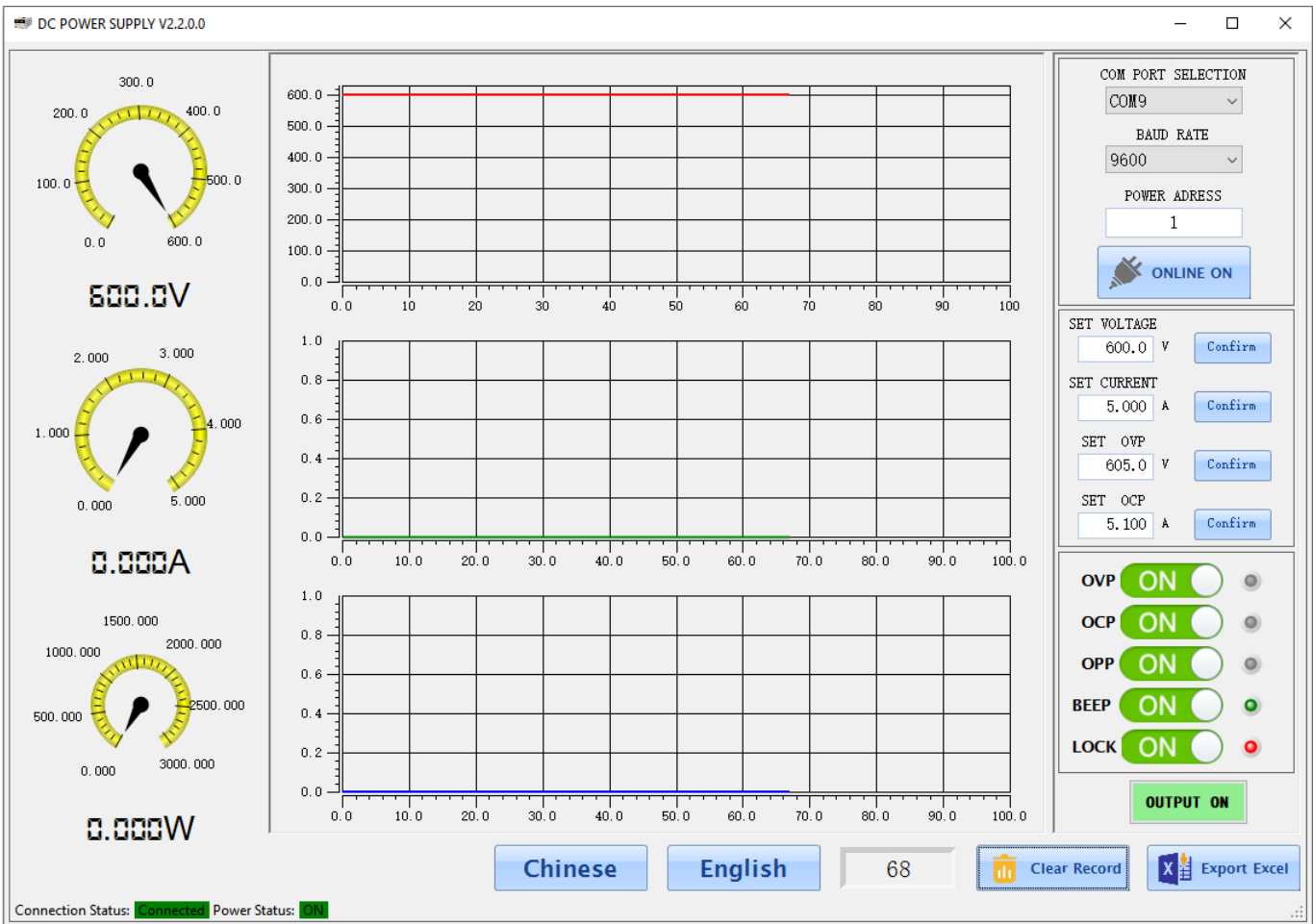
產品簡介 Introduction

DPP可程式大功率系列為單輸出開關式直流電源供應器，具有 USB介面進行通訊。最大功率可達6KW，DPP 系列可全面客製化最大電壓 1000V、最大電流 300A、最大容量6KW。

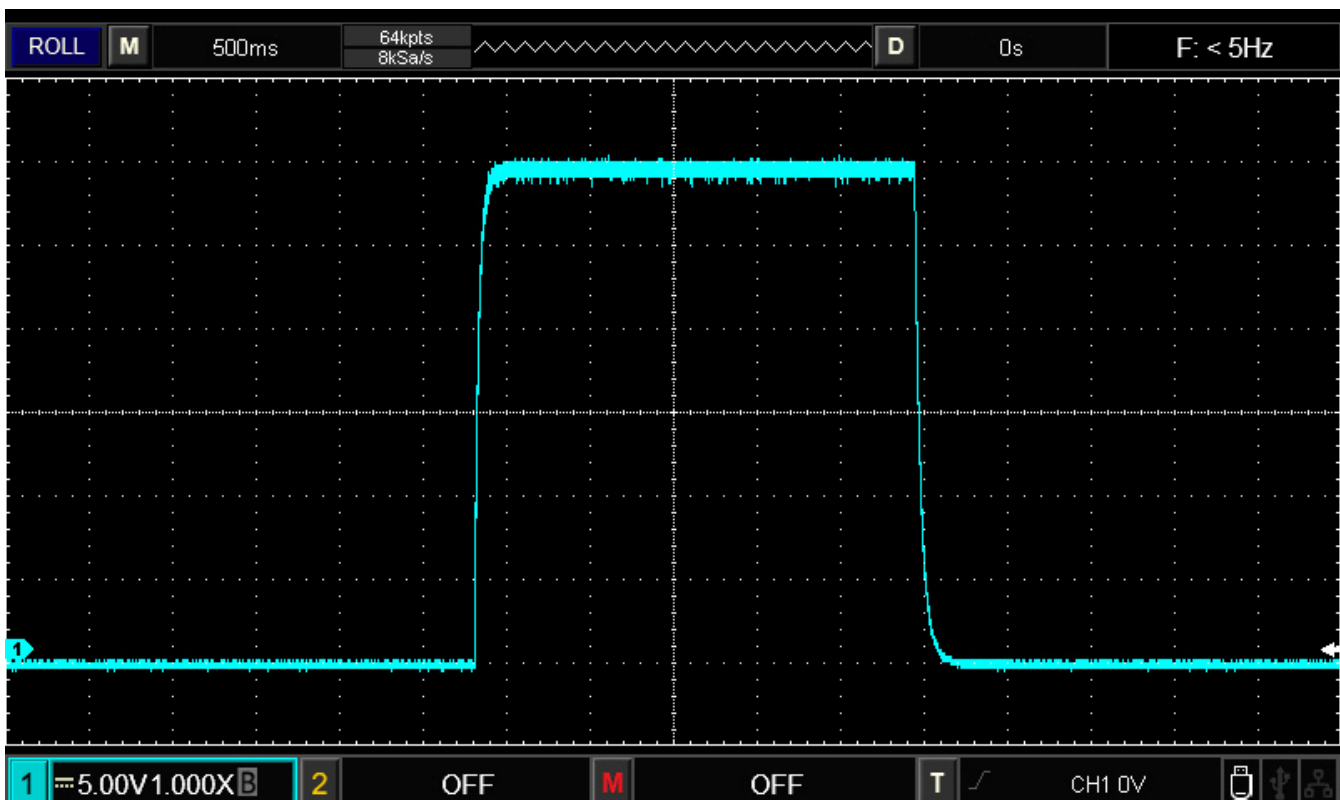
產品特色 Features

- 最大輸出功率範圍從 500W 到6kW
- 最大最大輸出電壓 1000V 輸出電流 300A
- MCU 數位控制與先進 PWM 調節技術
- 體積小、重量輕
- 定電壓 (CV) 和定電流 (CC) 操作；自動 CV/CC 切換
- 電壓、電流粗調和微調控制
- 過電壓、過電流、過溫度保護功能
- 內建蜂鳴器警報
- 面板鎖定和輸出 ON/OFF 功能
- 智慧型溫控散熱風扇
- USB 介面，支援 MODBUS-RTU 指令
- USB 介面可選購改為 RS232 或 RS485 介面
- 可接受客製化規格和功能

Free PC control software



No overshoot



Specifications

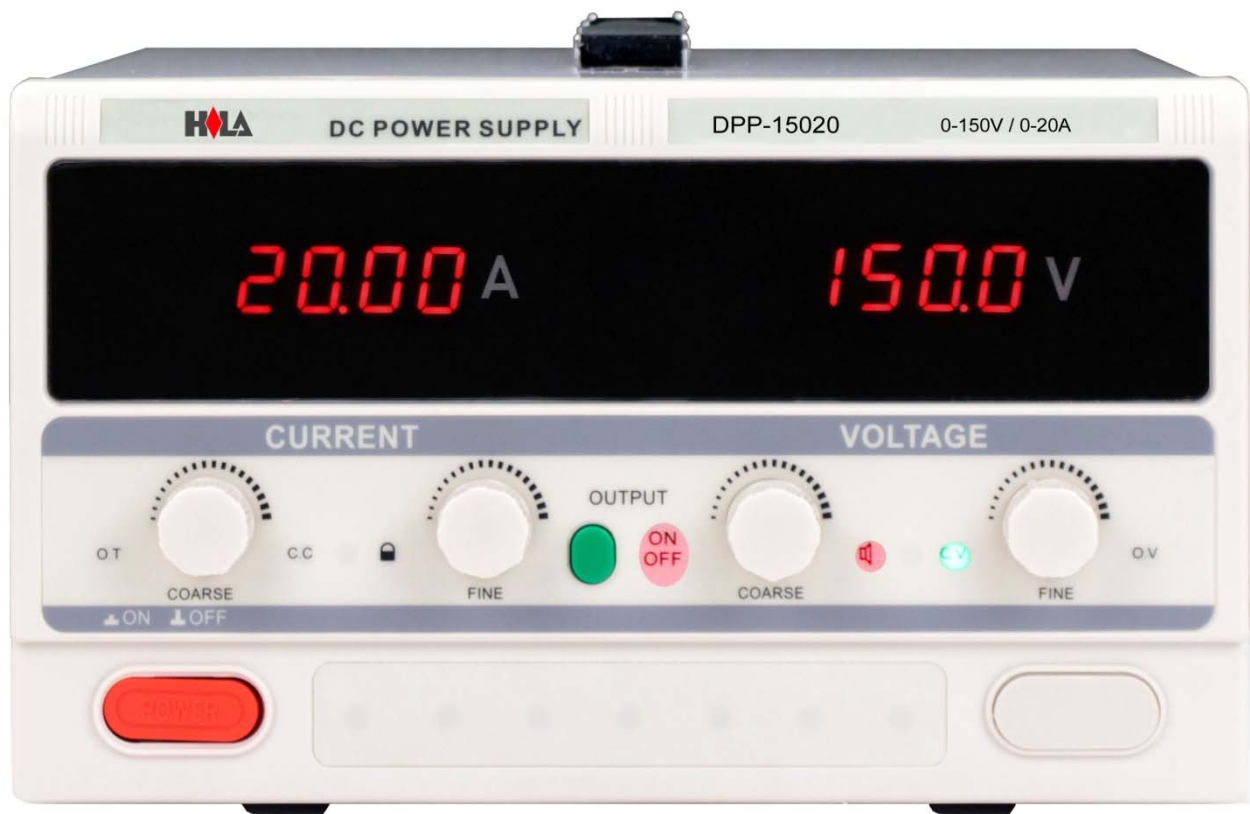
Output power	500W to 6000W
Working mode	PWM
Output	
Output voltage	DC 0 to full range adjustable
Output current	DC 0 to full range adjustable
O.V.P. range	DC 1~110%FS
O.C.P. range	DC 1~110%FS
O.P.P. range	DC 1~100%FS
Line regulation	≤0.5%FS
Load regulation	≤0.5%FS
Ripple & Noise	≤0.5%FS rms
Setting accuracy	0.1%FS +1 digit
Display	
Voltmeter	4 digits LED display
Ammeter	4 digits LED display
Voltage resolution	0.000-9.999V; 00.00-99.99V; 000.0-999.9V
Current resolution	0.000-9.999A; 00.00-99.99A; 000.0-999.9A
Readback accuracy	0.1%FS +1 digit
Communications	
Interface	USB Device, can be changed to RS232 or RS485 interface at request
Protocols	ModBus-RTU
General	
Protection	Over voltage, over current, over temperature and over power protections
Operating environment	0°C~40°C, <80%RH
Storage environment	-10°C ~70°C, <80%RH
Power source	AC110V/220V±10%, 50/60Hz
Input module	Power socket or terminal block
Dimension	200x150x285mm (M chassis, 200W~1800W) 260x160x380mm (L chassis, 500W~3000W) 260x160x440mm (XL chassis, 1800W~5000W)
Weight	Approx. 4kg to 11kg

Specifications are subject to change without prior notice.

Product photos (M chassis) 200Wx150Hx285Dmm



Product photos (L chassis 260Wx160Hx380Dmm) & (XL chassis 260Wx160Hx440Dmm)





Selection guide (200W~1500W)

M chassis, 200Wx150Hx285D mm, 200W~1500W					
Model	Rated Voltage	Rated Current	Rated Power	Display Resolution	
DPP-05120	0~5V	0~120A	600W	1mV	100mA
DPP-1530	0~15V	0~30A	450W	10mV	10mA
DPP-1550	0~15V	0~50A	750W	10mV	10mA
DPP-1560	0~15V	0~60A	900W	10mV	10mA
DPP-1580	0~15V	0~80A	1200W	10mV	10mA
DPP-15100	0~15V	0~100A	1500W	10mV	100mA
DPP-3020	0~30V	0~20A	600W	10mV	10mA
DPP-3030	0~30V	0~30A	900W	10mV	10mA
DPP-3040	0~30V	0~40A	1200W	10mV	10mA
DPP-3050	0~30V	0~50A	1500W	10mV	10mA
DPP-5020	0~50V	0~20A	1000W	10mV	10mA
DPP-5030	0~50V	0~30A	1500W	10mV	10mA
DPP-6010	0~60V	0~10A	600W	10mV	10mA
DPP-6020	0~60V	0~20A	1200W	10mV	10mA
DPP-10005	0~100V	0~5A	500W	100mV	1mA
DPP-10006	0~100V	0~6A	600W	100mV	1mA
DPP-10010	0~100V	0~10A	1000W	100mV	10mA
DPP-10015	0~100V	0~15A	1500W	100mV	10mA
DPP-12005	0~120V	0~5A	600W	100mV	1mA
DPP-12010	0~120V	0~10A	1200W	100mV	10mA
DPP-15003	0~150V	0~3A	450W	100mV	1mA
DPP-15005	0~150V	0~5A	750W	100mV	1mA
DPP-15010	0~150V	0~10A	1500W	100mV	10mA
DPP-20001	0~200V	0~1A	200W	100mV	1mA
DPP-20002	0~200V	0~2A	400W	100mV	1mA
DPP-20003	0~200V	0~3A	600W	100mV	1mA
DPP-20005	0~200V	0~5A	1000W	100mV	1mA
DPP-25001	0~250V	0~1A	250W	100mV	1mA
DPP-25002	0~220V	0~2A	500W	100mV	1mA
DPP-25003	0~250V	0~3A	750W	100mV	1mA
DPP-25004	0~250V	0~4A	1000W	100mV	1mA
DPP-25005	0~250V	0~5A	1250	100mV	1mA
DPP-30001	0~300V	0~1A	300W	100mV	1mA
DPP-30002	0~300V	0~2A	600W	100mV	1mA
DPP-30003	0~300V	0~3A	900W	100mV	1mA
DPP-30005	0~300V	0~5A	1500W	100mV	1mA
DPP-40001	0~400V	0~1A	400W	100mV	1mA
DPP-40002	0~400V	0~2A	800W	100mV	1mA
DPP-40003	0~400V	0~3A	1200W	100mV	1mA



Selection guide (500W~3000W)

L chassis, 260Wx160Hx380D mm, 500W~3000W					
Model	Rated Voltage	Rated Current	Rated Power	Display Resolution	
DPP-05200	0~5V	0~200A	1000W	1mV	100mA
DPP-15120	0~15V	0~120A	1800W	10mV	100mA
DPP-25100	0~25V	0~100A	2500W	10mV	100mA
DPP-3060	0~30V	0~60A	1800W	10mV	10mA
DPP-3080	0~30V	0~80A	2400W	10mV	10mA
DPP-30100	0~30V	0~100A	3000W	10mV	100mA
DPP-5040	0~50V	0~40A	2000W	10mV	10mA
DPP-5050	0~50V	0~50A	2500W	10mV	10mA
DPP-5060	0~50V	0~60A	3000W	10mV	10mA
DPP-6030	0~60V	0~30A	1800W	10mV	10mA
DPP-6040	0~60V	0~40A	2400W	10mV	10mA
DPP-6050	0~60V	0~50A	3000W	10mV	10mA
DPP-8020	0~80V	0~20A	1600W	10mV	10mA
DPP-8030	0~80V	0~30A	2400W	10mV	10mA
DPP-10020	0~100V	0~20A	2000W	100mV	10mA
DPP-10025	0~100V	0~25A	2500W	100mV	10mA
DPP-10030	0~100V	0~30A	3000W	100mV	10mA
DPP-12020	0~120V	0~20A	2400W	100mV	10mA
DPP-15020	0~150V	0~20A	3000W	100mV	10mA
DPP-20010	0~200V	0~10A	2000W	100mV	10mA
DPP-22010	0~220V	0~10A	2200W	100mV	10mA
DPP-25010	0~250V	0~10A	2500W	100mV	10mA
DPP-40005	0~400V	0~5A	2000W	100mV	1mA
DPP-50001	0~500V	0~1A	500W	100mV	1mA
DPP-50002	0~500V	0~2A	1000W	100mV	1mA
DPP-50003	0~500V	0~3A	1500W	100mV	1mA
DPP-50005	0~500V	0~5A	2500W	100mV	1mA
DPP-60001	0~600V	0~1A	600W	100mV	1mA
DPP-60002	0~600V	0~2A	1200W	100mV	1mA
DPP-60003	0~600V	0~3A	1800W	100mV	1mA
DPP-80001	0~800V	0~1A	800W	100mV	1mA
DPP-80002	0~800V	0~2A	1600W	100mV	1mA
DPP-80003	0~800V	0~3A	2400W	100mV	1mA
DPP-1000-1	0~1000V	0~1A	1000W	1V	1mA
DPP-1000-2	0~1000V	0~2A	2000W	1V	1mA
DPP-1000-3	0~1000V	0~3A	3000W	1V	1mA



Selection guide (1800W~6000W)

XL chassis, 260Wx160Hx440D mm, 1800W~6000W					
Model	Rated Voltage	Rated Current	Rated Power	Display Resolution	
DPP-10250	0~10V	0~250A	1250W	1mV	100mA
DPP-15150	0~15V	0~150A	2250W	10mV	100mA
DPP-15200	0~15V	0~200A	3000W	10mV	100mA
DPP-30120	0~30V	0~120A	3600W	10mV	100mA
DPP-30150	0~30V	0~150A	4500W	10mV	100mA
DPP-30200	0~30V	0~200A	6000W	10mV	100mA
DPP-5080	0~50V	0~80A	4000W	10mV	10mA
DPP-50100	0~50V	0~100A	5000W	10mV	100mA
DPP-50120	0~50V	0~120A	6000W	10mV	100mA
DPP-6060	0~60V	0~60A	3600W	10mV	10mA
DPP-6080	0~60V	0~80A	4800W	10mV	10mA
DPP-60100	0~60V	0~100A	6000W	10mV	100mA
DPP-8040	0~80V	0~40A	3400W	10mV	10mA
DPP-8050	0~80V	0~50A	4000W	10mV	10mA
DPP-8060	0~80V	0~60A	4800W	10mV	10mA
DPP-10040	0~100V	0~40A	4000W	100mV	10mA
DPP-10050	0~100V	0~50A	5000W	100mV	10mA
DPP-10060	0~100V	0~60A	6000W	100mV	10mA
DPP-12030	0~120V	0~30A	3600W	100mV	10mA
DPP-12040	0~120V	0~40A	4800W	100mV	10mA
DPP-12050	0~120V	0~50A	6000W	100mV	10mA
DPP-15030	0~150V	0~30A	4500W	100mV	10mA
DPP-15040	0~150V	0~40A	6000W	100mV	10mA
DPP-20020	0~200V	0~20A	4000W	100mV	10mA
DPP-20025	0~200V	0~25A	5000W	100mV	10mA
DPP-20030	0~200V	0~30A	6000W	100mV	10mA
DPP-25020	0~250V	0~20A	5000W	100mV	10mA
DPP-30010	0~300V	0~10A	3000W	100mV	10mA
DPP-30015	0~300V	0~15A	4500W	100mV	10mA
DPP-30020	0~300V	0~20A	6000W	100mV	10mA
DPP-40010	0~400V	0~10A	4000W	100mV	10mA
DPP-40015	0~400V	0~15A	6000W	100mV	10mA
DPP-50010	0~500V	0~10A	5000W	100mV	10mA
DPP-60005	0~600V	0~5A	3000W	100mV	1mA
DPP-60008	0~600V	0~8A	4800W	100mV	1mA
DPP-80005	0~800V	0~5A	4000W	100mV	1mA
DPP-80006	0~800V	0~6A	4800W	100mV	1mA